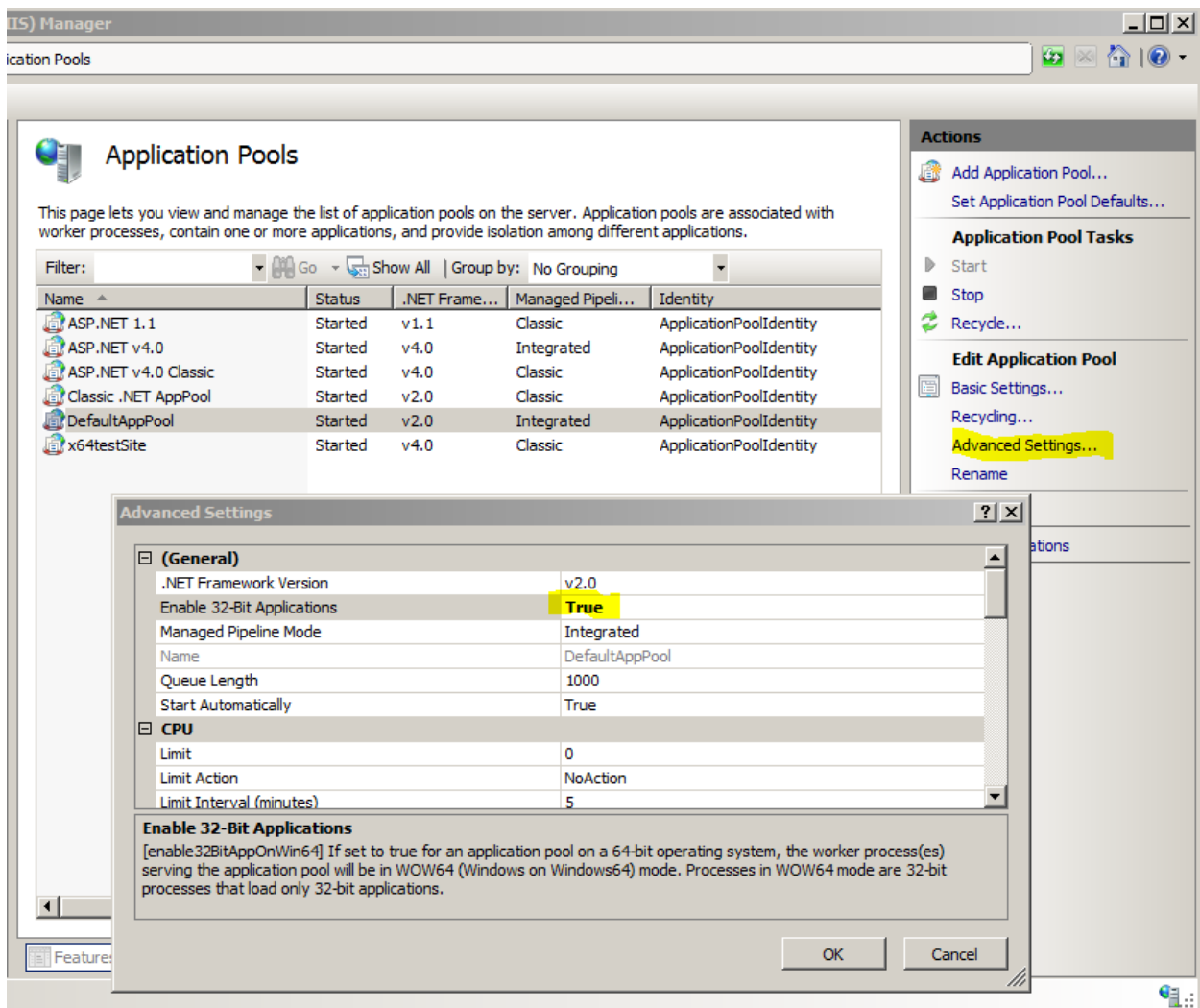


# HOWTO: Run 32-bit DotImage Assemblies in an ASP.NET Application on a 64-bit Machine

If you wish to run an ASP.NET web application that uses our 32 bit components on a 64 bit server, you need to enable 32 bit applications in the ApplicationPool which is running your site/application.

1. Go to START -> Settings -> Control Panel -> Administrative Tools -> Internet Information Services (IIS) Manager
2. Find the application pool that is running your site
3. Select "Advanced Settings ..." from the Actions menu
4. Set the "Enable 32-Bit Applications" value to True (see image below)
5. Cycle your application pool



For older (Legacy) versions of IIS and DotImage (.NET 1.1), See this Microsoft KB article for more information

## HOWTO: Run 32-bit DotImage Assemblies in an ASP.NET Application on a 64-bit Machine

[How to switch between the 32-bit versions of ASP.NET 1.1 and the 64-bit version of ASP.NET 2.0 on a 64-bit version of Windows](#)

For more information, please see: [INFO: Bitness Roundup Whitepaper: x86, x64, AnyCPU](#)

Original Article:

Q10181 - HOWTO: Running 32-bit DotImage assemblies in an ASP.NET application on a 64-bit machine

Atalasoft Knowledge Base

<https://www.atalasoft.com/kb2/KB/50275/HOWTO-Run-32bit-DotImage-Assemblies-...>